

CEDAR LOGSYSTEMS

800.600.5647

www.logs.net info@logs.net

Sales Associate Extension Numbers:
Caleb Huftalin - ext 53
Mike Craig - ext 81
Patti Knight - ext 98



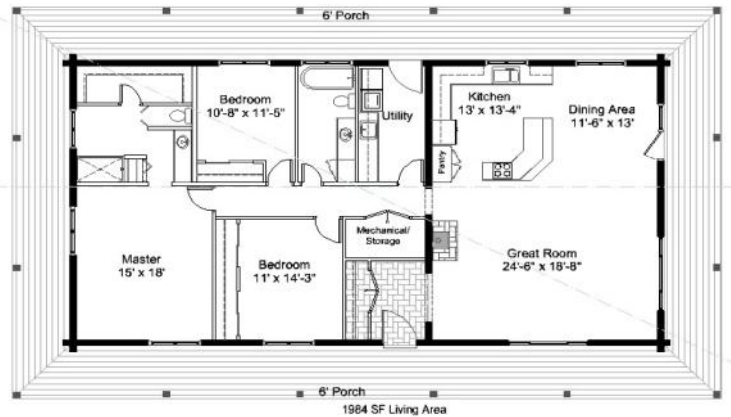
A CLS custom log home near Jackson, CA

A Texas Log Home (starting soon)

A custom designed Cedar log home will start in Bonham, TX, in late spring, 2007.

Mike & Taryn Nejteck met Cedar LogSystems at the Dallas Log Home Show. They worked with Mike Craig, CLS senior CAD designer, to create a log home design matching their tastes and lifestyle. Mike, who is a Texas native and an Aggie, will be on-site as the CLS technical supervisor for the log start. You're welcome to stop by the construction site.

This ranch style plan is 2000 square feet on one floor. It features an open floor plan design with a full wrap-around porch.



For additional information on this home, to be notified of the start date and location, or to set an appointment to visit this site, please contact Mike at 800.600.5647, x81.

We are always available for custom design and technical assistance. Let us help create "Your home, your way"!

ButyLog - the Best Seal for Your Log Home (by Caleb Huftalin, N GA Sales Associate)

When it comes to building a comfortable and durable log home, the importance of your seal system is second only to the type of log you choose. The significance is obvious, especially if you've ever seen a log cabin built more than a few decades ago. In those days, the large horizontal gaps seen between the logs were filled with a mortar-like chinking material.

Today, the technology for log home manufacturing, including improved sealing systems, is something you can't afford to ignore. Caulk, foam, fiberglass insulation and rubber gaskets are some of materials used to seal modern log homes.

Over time, these will degrade, break down or lose the ability to expand and contract with the logs. When inferior seals fail, the dreaded solution is to dig out your caulk gun and get to work before too much air or water infiltrates your living space.

Wouldn't it be prudent to just start with a superior seal system?

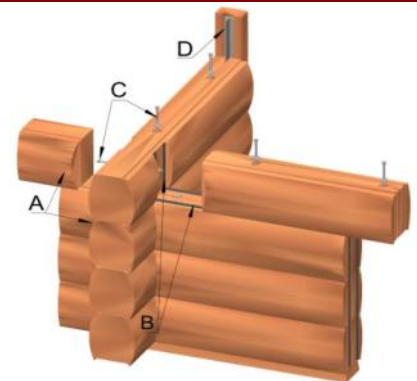
Cedar LogSystems uses "ButyLog". This gray, permanently soft, tacky sealant is specifically designed for use in all tongue and groove joints, end joints and corner mortises as well as around windows and doors (see "B" in illustration).

What makes it the best log sealant available? ButyLog contains a high percentage of virgin butyl rubber. It has very high cohesion strength and will expand and contract with your log home while maintaining a constant seal.

ButyLog can stretch 4 times its original thickness without seal failure. Try that with caulk, foam, or fiberglass insulation.

The bottom line? Using ButyLog on all sealing surfaces means a zero maintenance, permanent weather-tight log home.

Heard this one from a client: "This butyl seal you use is good to 2,200 mph." When asked how he knew that, he said: "I work on the canopy assemblies for the F-16 at Lockheed-Martin. It's what we use." And that folks, is good enough for me!



Call Cedar LogSystems for a demonstration of the best seal system in the log home industry. Toll Free: 800.600.5647.

Murphy, NC Custom... from the ground (way) up! (See photos on page four)

Sometimes when you walk onto a lot you just know it's the right spot for your dream log home. However, the proverbial "stock floor plan" just doesn't fit or doesn't feel right for your land.

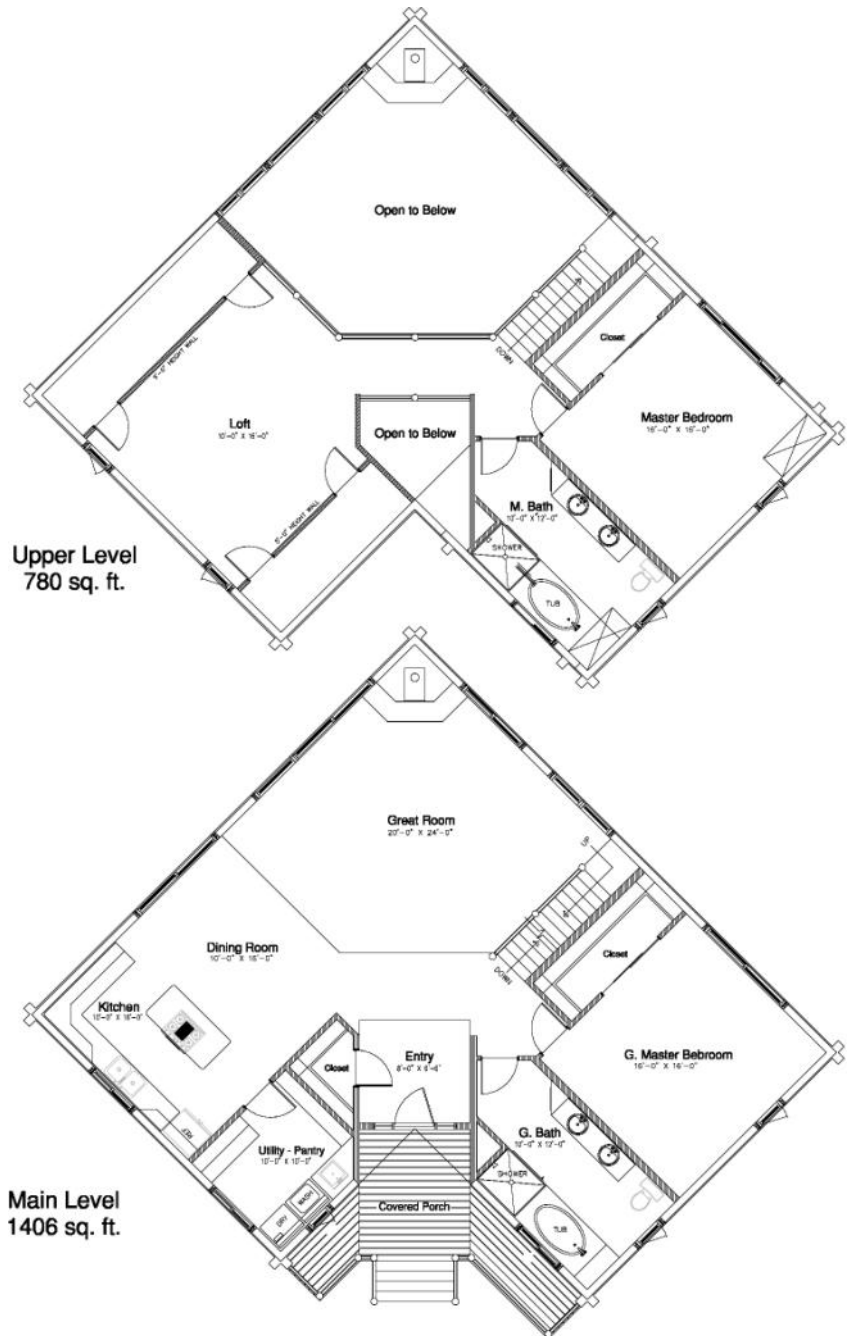
What if the lot is on a cliff overlooking a valley two hundred feet below? Wow! It's a great lot with an incredible view, but how and what should you do? When Dave and Natalie DeMarco of New Port Richey, FL, found themselves in that situation they called Cedar LogSystems and requested an on-site visit from one of our log home designers.

Immediately following the on-site visit the DeMarcos sat down with the designer and discussed their log home ideas. What developed over the next several hours was a sketch that evolved into the plan you see at the right.

First order of business - use large expanses of glass to take advantage of the panoramic views. Next, place the home on their lot at an angle (as shown) to afford better views to both the southeast and the southwest. This allows for views from every major room in the home.

The home featured here is now under construction in Murphy, NC. If you can't wait for the photos, please give Cedar LogSystems a call and we'll be happy to arrange an on-site visit to this or any of our other construction sites. Our national office can be reached at 800.600.5647. Or contact your Cedar LogSystems sales associate directly.

Look for additional construction photos of this home in the summer newsletter.



On-Site Visits (and why they are so important)

At Cedar LogSystems, we believe that in order to help you develop the best log home plan for your lifestyle and your land, we need to "see what you see". In other words, how can we help you realize your dreams if we don't know what your dreams are?

Taking the time to visit with you on your land and sitting down and designing for your lifestyle is just part of the many "extras" that are standard when you allow Cedar LogSystems to help you design "Your home - Your way".

Give us a call at 800.600.5647 to schedule your personal design consultation. Your dream, our design team. It starts with a call.

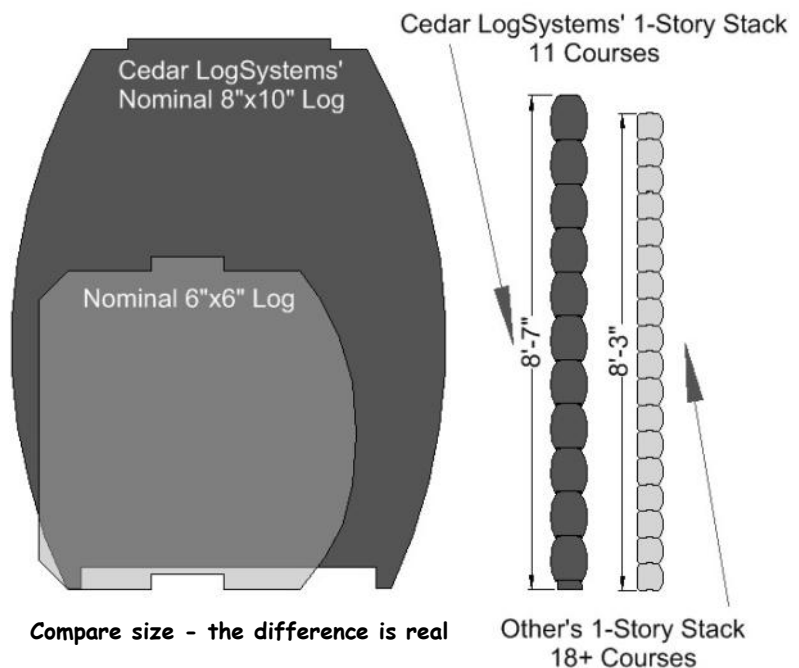
Logs are Logs...Right? Size does matter! (by Mike Craig, senior CAD designer)

Many people who dream and plan for their log home give scant consideration to what logs they'll use. Logs provide the structure for their home, shield them from the elements, and add to (or detract from) the durability and beauty of the home. Despite all this, people who would never dream of letting their builder choose appliances or bathroom fixtures for their home will trust him to choose their logs. The reason for this may stem from a lack of familiarity with logs. We all have a "comfort level" choosing appliances and cabinets, but when it comes to logs, that's seldom the case. Education helps the log home owner make an informed decision that will pay dividends for years to come.

Ask questions until you have answers that make sense to you.

The first consideration that affects the look, build-ability, comfort, and stability of your log home is the size (and species) of the logs. Log height affects the look of your home, both on the outside and inside, and the logs should fit the scale of your home. Many milled logs are only six or eight inches in height. This results in what I would call the "toothpick" effect. A two-story house with log gable ends is 23 feet in height. That requires 50+ courses of 6-inch logs and will definitely make your house look like it's made of "toothpicks". Not only is the appearance affected, but more courses mean more labor to build, more seal points and potentially a less stable wall.

Log width will impact your home's overall energy efficiency. Thermal mass is a characteristic of log structures, making them better at maintaining a constant temperature, and this too is enhanced by a thicker log. A wider log will also be more structurally stable and also make



Cedar

the best wood to have around your home

LogSystems

the best seal and corner system, period

construction easier and faster. Whatever a log's R-value is, more thickness means greater resistance to heat transfer.

Of course the "bigger is better" idea can be carried to an extreme. Large logs can actually overwhelm the scale of the house and detract from its appeal. Also, logs that are large (or heavy) require special equipment and slow down construction as well as increase cost.

Cedar LogSystems logs are 8" x 10". This dimension will suit the scale of almost any

log home. CLS Cedar logs provide the same energy efficiency as 12-inch wide pine or whitewood. Cedar has less weight by volume, which means two people can carry any log in the house.

While appliances, bathroom fixtures, and door handles may be easier to choose than logs, nothing is more important than what's around your home. Appliances, cabinets and carpet can be replaced, but trying to change out a solid log wall later is not an option. Think and choose wisely, and your home will last many lifetimes.

If it's not Cedar... it's just another log!

Plant Expansion
Blairsville, GA
Starting Soon

CEDAR LOG SYSTEMS

Box 25250
Colorado Springs, CO
80936-5250

Food for Thought!

Direct comments to: 800.600.5647 x99

When asked "What log wood species are you planning to use?" many people just say "We'll let our builder do that".

Are you going to let the builder choose your appliances or your cabinets? No!

You'll spend hours researching for a kitchen but... funny thing... a refrigerator can cost \$800-1,000, cabinets can cost \$8,000-10,000, log packages can cost \$80,000-100,000

You can change the refrigerator later, you can even change the cabinets later, ...but, you can't change the quality of the logs after they are built!

Logs - the most important decision all around your home. **Food for Thought!**

Log Homes - Custom Design - Custom Build - Nationwide

House up on the Hill! - New Log Home Start (Murphy, NC area)



Front Entry - second day of construction



Our new 135° angle wall

A true log wall* with a reverse 45° (and yes, it works for full log "prows").
(*most log companies only offer 135° in frame & siding)

The photo at left shows a closer view of the log home on the hill at the right



These photos just in...

This log home started April 16, just west of Murphy, NC. It is a custom design with a daylight basement created specifically for this lot. See the article and floor plan on page 2. To arrange an on-site visit to this site or to inquire about other construction sites, please call your sales associate or Cedar LogSystems at 800.600.5647.