

## CEDAR LOGSYSTEMS

800.600.5647

www.logs.net info@logs.net

Sales & Design  
800.600.5647  
For Eastern US ext 50  
For Western US ext 80



A CLS Solid Cedar Timber Home in Colorado

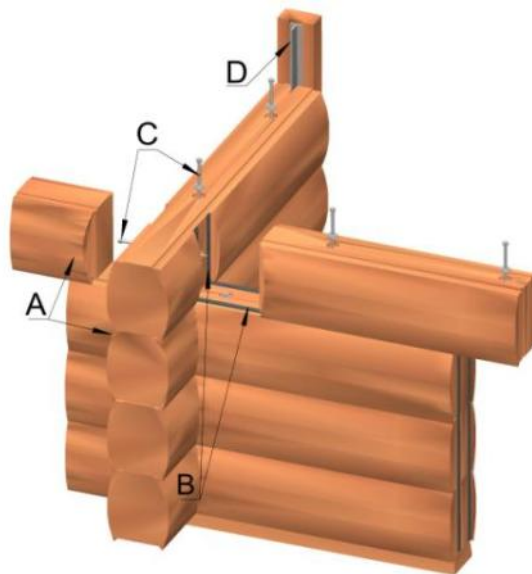
### Logs are Logs...Right? Log Shape by Mike Craig

This is part two of our continuing series on the importance of choosing the right log and log system for your home. And, it's worth repeating; the log-home buyer, not the builder, should be making this choice.

The log species and seal system you choose will determine the integrity and durability of your log home - now and forever.

Choose wisely.

In our spring newsletter we considered the size of the log and how it can influence the strength, comfort, and appearance of your log home. In this issue we'll look at how the log shape should affect your log home decisions. First, let's examine the Cedar LogSystems log shape, and then we'll look at some other log shapes.



Ask questions until you have your answers! Think and choose wisely, and your home will last many lifetimes.

*(Article continues on page 3)*

### Why do all your designs look the same? by Charles Knight, log home designer

We get this question several times a month. The log home plans you see on our website and in our literature are what clients buy. We can create any design or style you want or need (see the accompanying elevation and floor plans).

We customize or custom design almost every log home that we do. Our clients have every choice available. Most clients choose to allow us to use our 17 years in log and 20 plus years in the building and building supply business to work for them.

For many, the road "most" traveled is the best, and safest, route to follow. For those



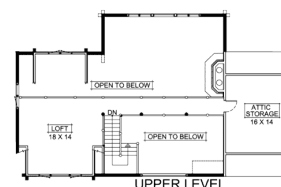
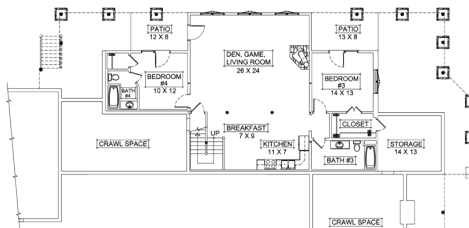
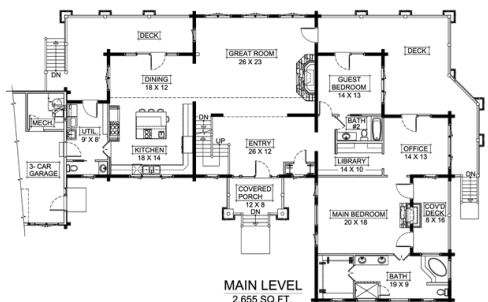
What may come of your dreams is limited only by your imagination and perhaps a bit, by your budget. Almost any design is possible with Cedar LogSystems!

brave souls willing to take the road "less" traveled, we have a pencil with an eraser. Full custom design is a major part of our standard package, and best of all, it doesn't cost an extra cent!

Bring us your ideas and dreams and we can create a custom Cedar log home that's perfect for your family and your lifestyle

If you like the plans you see, great! If you want to develop your own creation, give us a call, and we'll make every effort to create "your home, your way". It's what we do!

We're available 7 days a week. We'll make a design appointment and will even meet you on your site. On your land we can see what you see, and we can better assist you in designing your perfect log home.



# The Most Important Component In Your Log Home?

(and it's Not the Kitchen) by Caleb Huftalin, GA Sales Associate

Think about it: What's the most popular room in your house? Where do you end up when guests or family come over? That's right. The kitchen.

The kitchen easily consumes our focus, and decisions surrounding it seem so binding. After careful design and selection of your kitchen cabinets, you can choose the perfect appliances that will fit with the look and function of your lifestyle.

Are your appliance and cabinet selections really the only place to "go all out" and get the good stuff? Consider the ease of kitchen cabinet and appliance replacement. Then consider the difficulty of replacing your log walls with a superior wood specie or an internal, zero maintenance, air tight seal system.

Cabinets, appliances, light fixtures, floor coverings, wall finish are all important considerations when designing and building your new log home. And every one of these can be changed and replaced at any time in the future. Even the roofing can be upgraded later.

Your log walls can never become naturally insect resistant unless they start that way. The opportunity to replace your corner profile and lateral seal system no longer exists once your home is constructed.

Decide now on the quality you want for your log wall system. There is no second chance. If you think you can't afford the best log and seal system, then leave the other stuff for later. Refrigerators can cost \$800-\$2,500, cabinets can cost \$8,000-

\$10,000, and the log package can cost up to \$80,000-\$100,000. With this in mind, a quality Cedar log package should rank above all other choices as the most important decision when it comes to final decisions for your log home. **Cedar, the \$7,000 Advantage!**



Even Bears know - Cedar makes a better Log Home!



What can't be modified and improved later are your log walls. The system that you choose to place between the outside elements and your family should be built to last.

If it's not **Cedar...** you're *barking* up the wrong tree!

## Fall Log Home Shows (or where we'll be - see you there!)

**\*Salt Lake City, UT - September 7 - 9**    **\*\*Atlanta, GA - September 21 - 23**    **\*\*Charlotte, NC - October 5 - 7**

**Ontario, CA - October 19 - 21**

**Tampa, FL - November 16 - 18**

**Your Town, Earth - Anytime!**

Give us a call at 800.600.5647 to schedule your personal design consultation. Your dream, our design team. It starts with a call.

## \*\*Open House - September 29 & 30

Discover the "Cedar" difference! The weekend between Atlanta and Charlotte we will hold an open house in Murphy, NC  
Call Caleb at 800-600-5647, ext 53 for additional information and to schedule an appointment

*\*See the article at the bottom of page 4 for info about the Salt Lake City Open House*

(from page 1) **Logs are Logs...Right?**

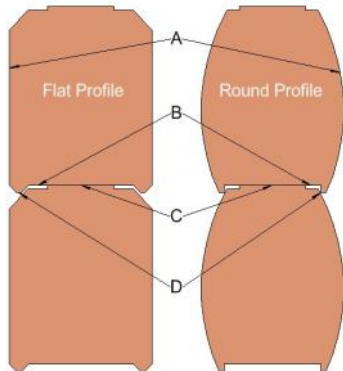
**Log Shape!** by Mike Craig, senior CAD designer

**Cedar LogSystems Log:** (Refer to illustration below)

A. With both the rounded and flat profile you'll have attractive walls, inside and out, that easily accommodate the hanging of pictures, installation of cabinetry, and connections to interior walls.

B. The cut at the outer edges of the log's upper surface provides room for our non-curing butyl rubber seal to spread, adhere, and form an airtight seal against all outside elements. Should any movement occur in the logs, the highly elastic butyl rubber is able to expand and contract while maintaining air seal.

The Cedar LogSystems Log



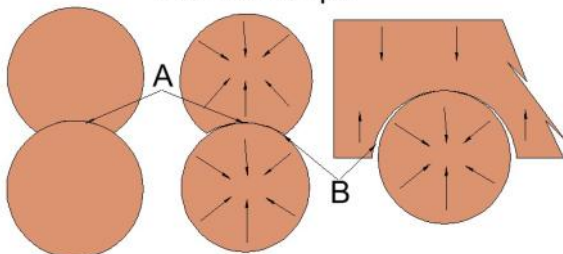
C. The wide flat area at the top of our log provides a level, stable platform on which to stack the next log while allowing for maximum distance between the inner and outer air seal. This means more insulation and air seal from the inside out.

D. Our unique "spurs" or drip edges serve a dual purpose. They allow moisture to run harmlessly down the exterior walls and they also hide the butyl seal system. Two great things about our seal system - you don't see the seal and you never have to maintain it.

Let's look at other possible log shapes and stack methods (at right) and see how they "stack-up" against the CLSI log system. (If you've read this far, you are a detail person, call us for a detailed offer! the Editor)

**Swedish cope log** (below): Logs change shape. They shrink as they dry, for example. Most of this shrinkage and movement is toward the center of the log's growth rings. And if you've heard that logs don't shrink - they do, and what happens when dry logs are exposed to high moisture - they expand! All log systems should "allow" for movement. All logs (all wood) move! Ignoring the issue will not make it go away.

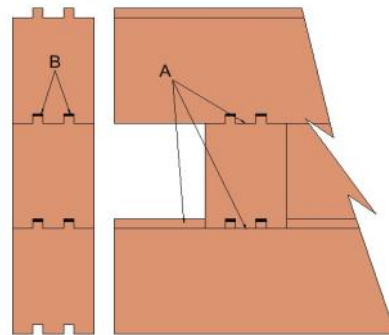
Swedish Cope



With Swedish cope (lower left) as shrinkage or expansion occurs, the area of log-to-log contact present when the logs were stacked tends to change shape (a). The seal product (whatever that may be) is smashed completely flat between courses (b), there is very little volume for the seal product to fill the gaps as they appear. The problem is even more evident in a saddle-notch corner (b).

**Tongue & groove log** (below): usually one, two or three tongues. There are two basic drawbacks with these designs. The first is the possibility of moisture accumulation between the tongues (a), leading to water accumulation and possible rot and decay.

Multiple Tongue & Groove



The problem is compounded by using a "butt and pass" corner style. The extending piece of log with its multiple tongues create a snow, ice and water trap, allowing water to stand on top of the logs. The moisture can then seep into the home by following the raceway created between the tongues. Another issue is the reduced distance between the inner and outer seal (b). This results in lower insulation and air seal value between the lateral joints of each course. Further chances for air seal failure occur at the crossing of the corners. You either have to remove the excess tongue from the lower log or notch the bottom of the next log.

And while caulking is an option with butt and pass, do you really want that chore on your yearly "to do" list? Didn't think so!

**Final Thoughts**

The Cedar LogSystems construction system, corner styles, and log profiles are products of years of field experience and design and development. CLSI provides the best wood species (Cedar), the best corner style (mortise & tenon) and the best seal system (ButyLog) available. Our unique log shape reduces log settling issues, provides structural stability, stacks faster and easier, keeps out weather, and looks great while accomplishing all the above. If you have any questions about our logs or our log systems, give us a call at 800.600.5647.

*Mike Craig is our senior CAD designer. He is a man of many talents - in addition to CAD design, he has managed plant operations and is an experienced log tech with many log stacks to his credit. Mike, a retired Lt. Colonel, USAF, and his wife, Donna, live in a Willow Creek style log home northeast of Colorado Springs. You can view their log home on our website at [www.logs.net](http://www.logs.net).*



# CEDAR LOGSYSTEMS

## Food for Thought!

Direct comments to: 800.600.5647, x99

**The \$7,000 Advantage!** After hearing stories of Cedar costing 25-40% more, maybe it's time to clear the air!

A Cedar log home is obviously better! Why else would all the other companies charge a premium for Cedar? Let's address the issue of how much more. If you take an average sized log home - we'll use the Enchanted Forest at 1932 SF - you would need around 14,000 BF of 8" logs (board foot is a wood volume measurement) to build your log home.

At \$500/MBF more for Cedar (actual mill cost difference) that makes Cedar only \$7,000 more - about 2-2.5% of the total cost of your log home. Money well spent!

**Cedar, the \$7000 Advantage!**

Cedar LogSystems, Inc  
PO Box 25250  
Colorado Springs, CO  
80936

Log Homes - Custom Design - Custom Build - Nationwide

## Logan, UT, Log Home under construction (when more is less)



When the Ron and Beth Stagg family of Logan, UT, decided to build their dream log home they talked with many different companies. Although they wanted Cedar, many companies told them that while Cedar is a better wood, it is also more expensive, as much as 25-40% more (according to the "sub" urban legend).

After talking with Cedar LogSystems the Staggs realized they could have Cedar. Not only does CLSI offer Cedar as the standard log, since CLSI specialize in Cedar the affordability issue became a non-issue (See "Food for Thought" above for details).

Moving along, the Staggs decided to drive to Colorado Springs to visit, view and discuss log home plans. From that meeting and several plan changes, the log home plan at right was developed.

Then Ron decided to save money by downsizing and that's when a



new issue arose. Once the plan was redrawn and submitted to the builder and to the appraiser, the numbers no

longer matched! The cost per square foot to build had exceeded the cost per square foot for the appraisal. That's right, you read correctly, the home was too small to meet the financing criteria.

After this revelation Ron called back to the CLS office, and after a "small" amount of grief from his salesperson, he had the plan returned to its original size.



*This home will be available for viewing during the Salt Lake City log home show, Sept. 7, 8 & 9.*

The difference - \$40,000 in appraisal vs. a few thousand extra to build the larger home. Why? Because empty space doesn't cost as much as you might think. The high costs in a home are in the kitchen, the baths and other large amenities. The larger the square footage, the easier it is to spread those costs into the total cost of the home. So when your sales associate suggests that you make your plan a bit larger, maybe...