



Cedar...the best wood around your log home

"Cedar is a great wood but it costs more, right?"

If anyone tells you that whitewoods are just as good as Cedar, then ask what they recommend for roof fascia. If their answer is Cedar (the best choice due to weather resistance), then you have "your final answer".

Of the many stories and questions we hear while discussing log homes with clients, this comment has to rank near the top.

The cost of Cedar vs. pine varies from company to company. A typical 2000 sf Cedar log home, when completed, should cost only \$6,000-7,000* more than a comparable pine log home. A small difference in price for a big difference in quality.

All things considered, Cedar is the least expensive wood species for your log home. It twists and warps far less than common whitewoods. Cedar also shrinks and settles less. Cedar has less future maintenance, saving cost now and in the future.

Less future maintenance with a Cedar Log Home is due in part to Cedar's natural resistance to insects, rot, and decay. There is no need to treat and retreat your home with insecticides and other chemicals.

Cedar is a 50% better insulator than whitewood (pine, spruce, etc). This results in lower utility costs. Cedar's lighter weight allows for easier handling and faster build time. And, with lighter weight, shipping is on 1 truck rather than 2, which cuts freight in half.

*As an example - the difference between Cedar and pine for a 1932 sf Enchanted Forest plan is \$7,035!

For more information about Cedar, check out our website at www.logs.net or better yet, check for yourself with a web search for "incense cedar".

Cedar - Nature's Best

100% renewable resource

1 1/2 times the insulation of pine

Lighter weight - faster build time

Less checking, cracking and settling

Resistant to insects - no chemicals

Less log movement - no adjustments

Air Tight by Design vs. air tight by "maintenance" (who wants maintenance?)

Cedar LogSystems' air and moisture seal is an integral part of our log home system. If you have a great log (Cedar) and a great window and door (Eagle), then all you need is an incredible seal system (ButyLog®).

Our logs have the "look" of Swedish cope saddle notch (see "A" on drawing). That's where the similarity stops.

The ButyLog® is placed on both sides of the wide tongue (see "B" on drawing). This creates a 5" air seal barrier between the interior and exterior air temperatures.

The horizontal interface between logs is one of the "energy bandits" in a log home. In a Cedar LogSystems' log wall that interface area is nearly 6" in width.

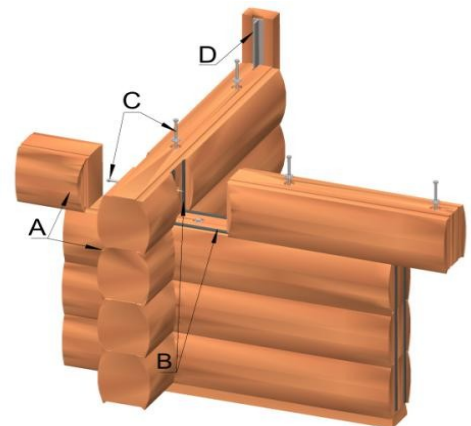
ButyLog® is also used at all vertical joints (see "B" on drawing). The Colorado Corner is mortise and tenon, not butt and pass, with an 8" Assy® Fastener (see "C" on drawing) placed horizontally to secure the tenon into the mortise at all corners.

Cedar LogSystems uses 12" Assy® Fasteners (see "C" on drawing) to secure logs together. This allows for a much tighter fit between individual log courses. No other fastening system has the "pull down" of the Assy® Fastener. This helps to minimize the effects of shrinkage and settling.

All logs (all wood) move. Cedar LogSystems uses cedar bucks (see "D" on drawing) with aluminum "t-channel" to allow for that movement. These bucks allow the logs to move up and down without affecting the window or door operation. The window and door trim is applied to the buck and is not attached to the log. This creates a "unit" around which the logs can move, independent of the window or door unit.

Your Cedar LogSystems' log home will be low maintenance and energy efficient for centuries to come.

Ask for a demonstration of the Colorado Corner and of the Cedar "LogSystem".



Colorado Corner - get into "the corner"

Remember

Caulk is a "maintenance" product.

If you don't caulk your log home, you'll never have to re-caulk your log home!

(Dumb, but true)

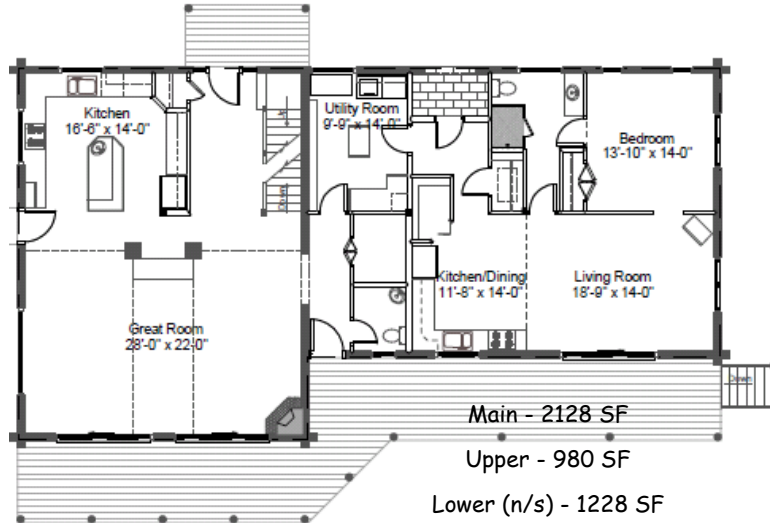
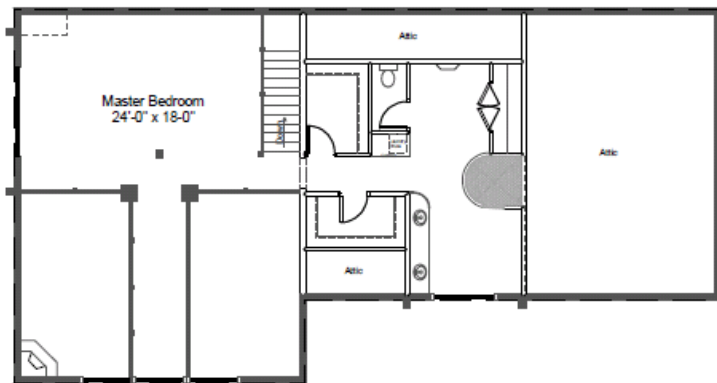
Starting June 2009 - Coeur d'Alene, ID



An ideal "two family" home.

Two complete living areas, each with their own Kitchen, Living Area and Master Bedroom with en-suite bath.

Connected via the common utility this home was custom designed from the ideas the clients brought to the designer. Everything (x2) under one roof.



Main - 2128 SF
Upper - 980 SF
Lower (n/s) - 1228 SF

Starting July 2009 - Florissant, CO



Here's the big brother to our "Wolf Creek" model. A home that has been redesigned and resized for the needs of a discerning client. The upper floor is shown with only one bedroom (and two lofts, one small and one huge). The owners can easily finish the larger loft into one large or two small bedrooms and still have the smaller loft. An additional bath can be added directly above the master bath. This plan gives you a look into how easily one of our "Optimized" floor plans can be customized to the needs of any family.

Starting June/July 2009 - Alturas, CA



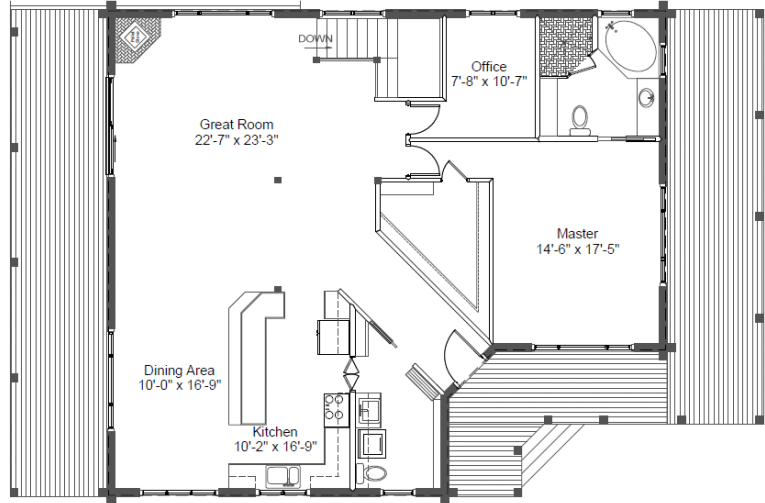
Main - 1624 SF
 Lower (n/s) - 448 SF
 Garage (lower) - 714 SF

A great, easy living, design. Again, this is a custom design from the client's ideas.

All principle living is on the main floor. The master has an en-suite bath and offers a huge walk-in closet.

The grand entry welcomes all guests and at the same time opens the visitor's eyes to the incredible vistas to the South and West through the angled windows beside the fireplace.

The lower floor (not shown) offers a guest bedroom with another full bath.

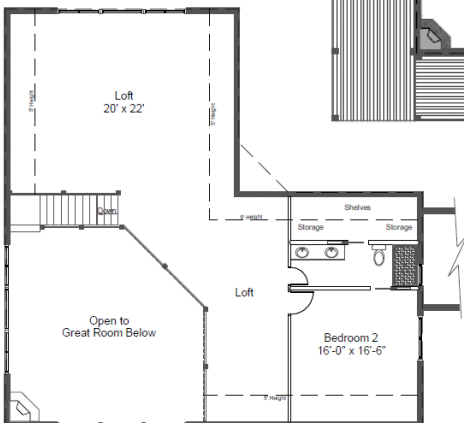
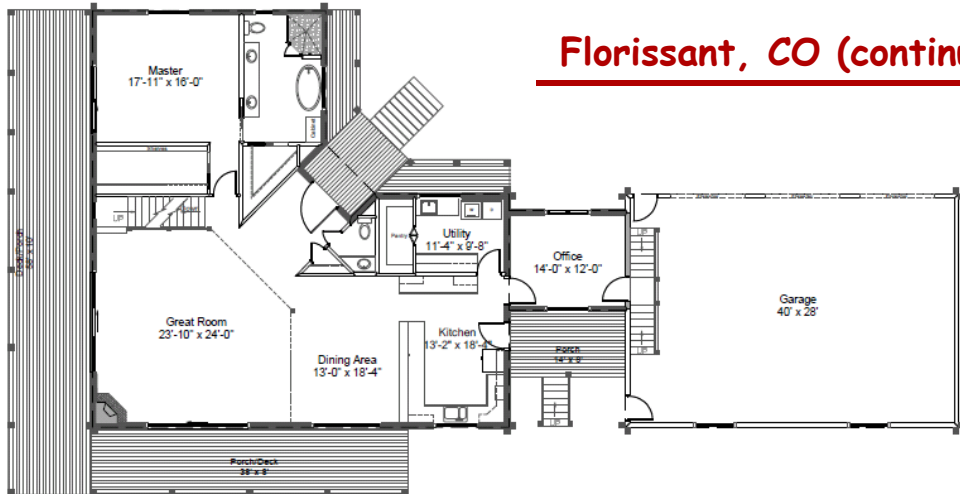


And notice - the oversize 3-car garage with enough space for any project.

The ultimate garage for storage or just a lot of "big kid" toys.

An office between the garage and the main home offers a quite retreat from the world.

Florissant, CO (continued)



Main - 2168 SF
 Upper - 1108 SF
 Lower (n/s) - 1400 SF
 Garage - 1120 SF

CEDAR LOG SYSTEMS

PO Box 25250
 Colorado Springs, CO 80936

800.600.5647

www.logs.net info@logs.net

Food for Thought!

Many people ask "When is the best time to plan and build my dream log home?"

Simple Answer? *Now* rather than later.

Why? All things being equal (and unknown), it is more likely prices will go up, not down. Interest rates will go up, not down. With the economy what it is - don't wait!

The older you get, the more likely you are to retire. It beats all other options!

Wouldn't it be nice to move into the *dream* log home that you've always *imagined*?

Happily Ever After... starts *now*! Tickets are selling fast! Get on board today.

A phone call will jump start your future!

Direct comments to: 800.600.5647, x99

**99% of our Log Home owners
 are Conservative.
 Buy your Log Home now
 before you turn into a liberal.**

Log Homes - Custom Design - Custom Build - Nationwide

Why do all your designs look the same? by Charles Knight, log home designer

We get this question frequently. The log home plans you see on our website and in our literature are what clients buy. (They are called "optimized" for a reason.) We can create any design or style you want or need (see the accompanying custom plans).

We customize or custom design almost every log home that we do. Our clients have every choice available. Most clients choose to allow us to use our 19 years in log and 20 plus years in the building and building supply business to work for them.

For many, the road "most" traveled is the best, and safest, route to follow. For those brave souls willing to take the road "less" traveled, we have a pencil with an eraser.

Full custom design is a major part of our standard package, and best of all, it doesn't cost an arm and a leg!

Bring us your ideas and dreams and we can create a custom Cedar log home that's perfect for your family and your lifestyle.

What may come of your dreams is limited only by your imagination and perhaps a bit, by your budget. Almost any design is possible with Cedar LogSystems!

If you like the plans you see, great! If you want to develop your own creation, give us a call, and we'll make every effort to create "your home, your way". It's what we do!

We're available 7 days a week. We'll make a design appointment and will even meet you on your site. On your land we can see what you see, and we can better assist you in custom designing your perfect log home. It's time to make your move.

